

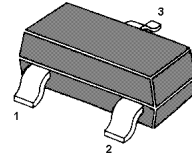
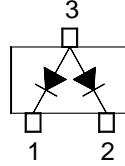
# BAW56

## Features

- Small package
- Low forward voltage
- Fast reverse recovery time
- Small total capacitance

## Applications

- Ultra high speed switching application



SOT-23 Plastic Package

## Absolute Maximum Ratings ( $T_a = 25\text{ }^\circ\text{C}$ )

| Parameter                       | Symbol              | Value | Unit |
|---------------------------------|---------------------|-------|------|
| Peak Repetitive Reverse Voltage | $V_{RRM}$           | 85    | V    |
| Continuous Reverse Voltage      | $V_R$               | 75    | V    |
| Forward Current (DC)            | Single Diode Loaded | 215   | mA   |
|                                 | Double Diode Loaded | 125   |      |
| Repetitive Peak Forward Current | $I_{FRM}$           | 450   | mA   |



# BAW56

## Silicon Epitaxial Planar Switching Diode

### Typical Characteristics

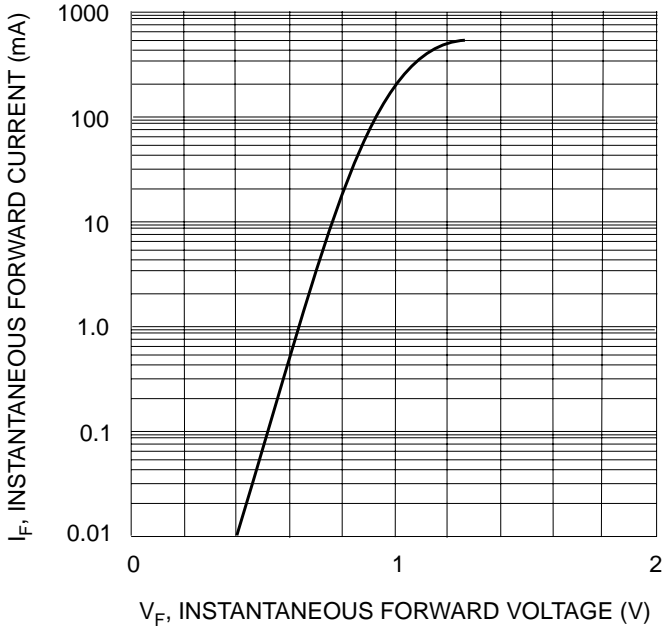


Fig. 1 Forward Characteristics

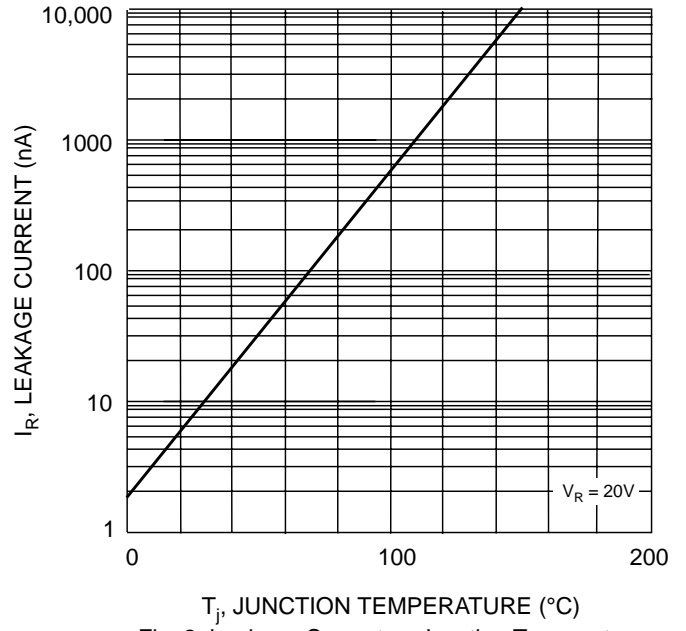


Fig. 2 Leakage Current vs Junction Temperature

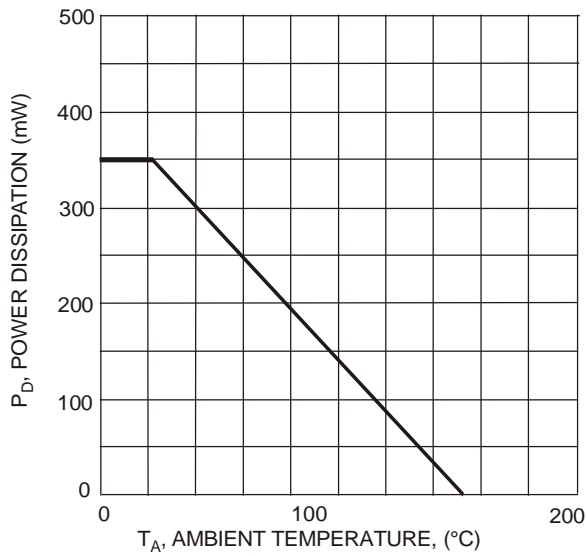
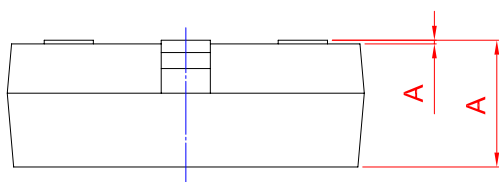
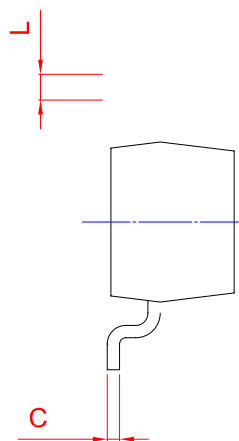
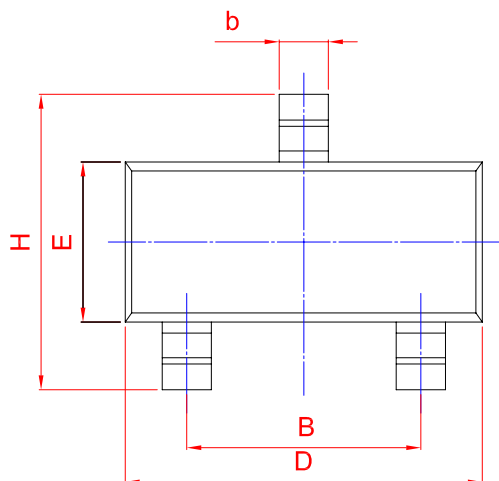
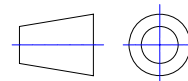


Fig. 3 Power Derating Curve, Total Package



| UNIT | A            |  |              |              | D            | E |  | A1 |  |
|------|--------------|--|--------------|--------------|--------------|---|--|----|--|
| mm   | 1.40<br>0.95 |  | 0.50<br>0.35 | 0.19<br>0.08 | 3.10<br>2.70 | ~ |  |    |  |