



MG25P12E1A

A

- 8 [] / [] []
- , . L O / . P]a Q] [] P L [] []
- T P] [] [] b P] [] []
- 7 b b T N S T R W P
- 7 b a_N L b T S [T] P P [P] L] P N P O N P
- M O T R Q Q] P N a P] d L T [L] L W W B /
- 7 b T O N L N P N L P
- 3 R S S] N] N T N L [L M M M M
- 8 L c T U N T P [P] L] P °C

. W W N] 0 T P] A W R P	A ₀	A ₂₀ (A . (, a (°C		A
. T . W W N] .]] P	.	M (°C, T _{au} Lc = °C		,
= P [P T] P P L V . W W N] .]] P	. = 8	[(,
2 L P 0 T P] A W R P	A ₂₀	a (°C	±	A
LW b P] / T [L T		Qz M (°C au Lc (

MG25P12E1A

2LPP TP] SJP S WA WRP	A ₂₀ s	A ₂₀ (A ₀ . (, a(°C			A	
. WVN] 0 TP]. Q]JP	. 0	A ₀ (AA ₂₀ (A a(°C			,	
. WVN] 0 TP] L]LT A WRP	A ₀ L	N , A ₂₀ (A a(°C			A	
		N , A ₂₀ (A a(°C				
		N , A ₂₀ (A a(°C				
2LP. SL]RP	2				.	
[. L[LNTL NP	. P	A ₀ (A A ₂₀ (A			1	
=PaP] P]L Q]. L[LNTL NP	.]P	Q 83e a(°C			1	
2LP 0 TP] WLVLRPN]JP	20	A ₀ (A A ₂₀ (A a(°C			,	
] / P _{Wd} TP	0	. (, A ₀ (A A ₂₀ (A =2 (a(°C				
=TP TP]]					
] Q/ P _{Wd} TP	0 Q					
1LWWT P	Q					
0 P]Rd / T [LT /]TR] TP	0					
0 P]Rd / T [LT /]TR] Q TP	0 Q					
] / P _{Wd} TP	0					
=TP TP]]					
] Q/ P _{Wd} TP	0 Q					
1LWWT P	Q					
0 P]Rd / T [LT /]TR] TP	0					
0 P]Rd / T [LT /]TR] Q TP	0 Q					
. / LL	N		I A ₂₀ (A a(°C A _W (AA ₀₈ A			,



MG25P12E1A

=P[P T&P PLV=PaP] P A WRP	A==8	a(°C		A
. T / . 1]bL]O.]]P	1			,
=P[P T&P PLV1]bL]O.]]P	1=8	[(,
aLWP		A=([(a(°C		'
		A=([(a(°C		

1]bL]OA WRP	A1	1(, a(°C			A
		1(, a(°C			
		1(, a(°C			
=PN aP]PO. SL]RP PLV=PaP] P=PN aP]d]]	1(, A=(A OT O (, a(°C			.

MG25P12E1A

. WVN] 0 TP] A WRP	A ₀	A ₂₀ (A . (, a(°C		A
. T . WVN].]P	.	N(°C, T _{allc} = °C		,
=P[PT&P PLV. WVN].]P	. =8	[(,
2LP 0 TP] A WRP	A ₂₀	a(°C	±	A
LW bP] / T [LT		N(°C aLc(°C		B

2LPP TP] S]P S WA WRP	A _{20 s}	A ₂₀ (A ₀ . (, a(°C		A
. WVN] 0 TP]. Q]P	. 0	A ₀ (AA ₂₀ (A a(°C		,
. WVN] 0 TP] L]LT A WRP	A _{0 L}	N(, A ₂₀ (A a(°C		A
		N(, A ₂₀ (A a(°C		
		N(, A ₂₀ (A a(°C		
2LP. SL]RP	2			.
[. L[LNTL NP	. P	A ₀ (A A ₂₀ (A		1
=PaP] P]L Q]. L[LNTL NP	.]P	Q 83e a(°C		1
2LP 0 TP] WLVLPN]P	20	A ₀ (A A ₂₀ (A a(°C		,
] / PWD TP	0	. (, A ₀ (A A ₂₀ (A =2(a(°C		
=TP TP]]			
] Q/ PWD TP	0 Q			
1LW/TP	Q			
0 P]Rd / T [LT /]TR] TP	0			
0 P]Rd / T [LT /]TR] Q TP	0 Q			



MG25P12E1A

] / PWD TP

o

. (,
A₀(A
A₂₀(A
=2(
a(°C

MG25P12E1A

$=P[P T \bar{E}P \text{ PLV}=\text{PaP}] \text{ PA } \bar{W}RP$	$A_{=8}$	$\mu \text{ } ^\circ\text{C}$		A
$, aP]LRP [\cdot]P$ $3e \text{ TPbLaP}$	1, A	$\mu \text{ } ^\circ\text{C}$,
$8LcT =8 \cdot]P L$ $=PNQP [$	$=8 8$	$\mu \text{ } ^\circ\text{C}$,
$]RP 1]bL]O.]P$	1 8	$A=(\mu \text{ } ^\circ\text{C}$,
aLWP		$A=(\mu \text{ } ^\circ\text{C}$,

$/ \text{TOP 1 }]bL]OA \bar{W}RP$	A_1	$\mu \text{ } ^\circ\text{C}$		A
$=\text{PaP}] \text{ P. }]P$	=	$\mu \text{ } ^\circ\text{C } A=(A$,

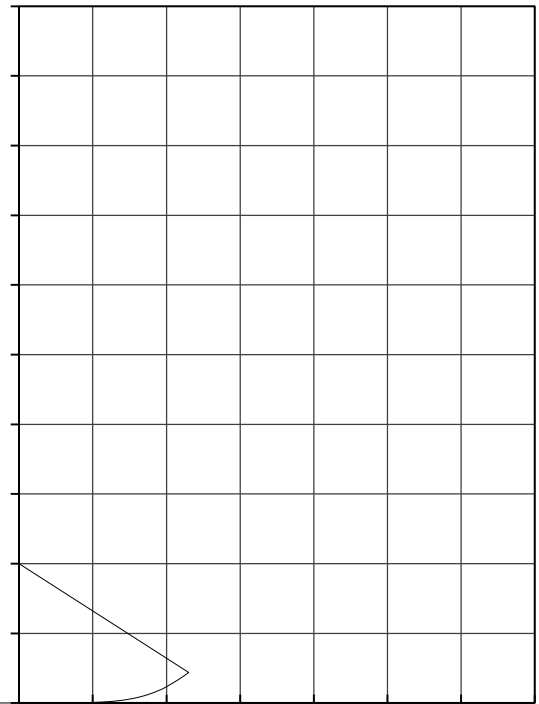
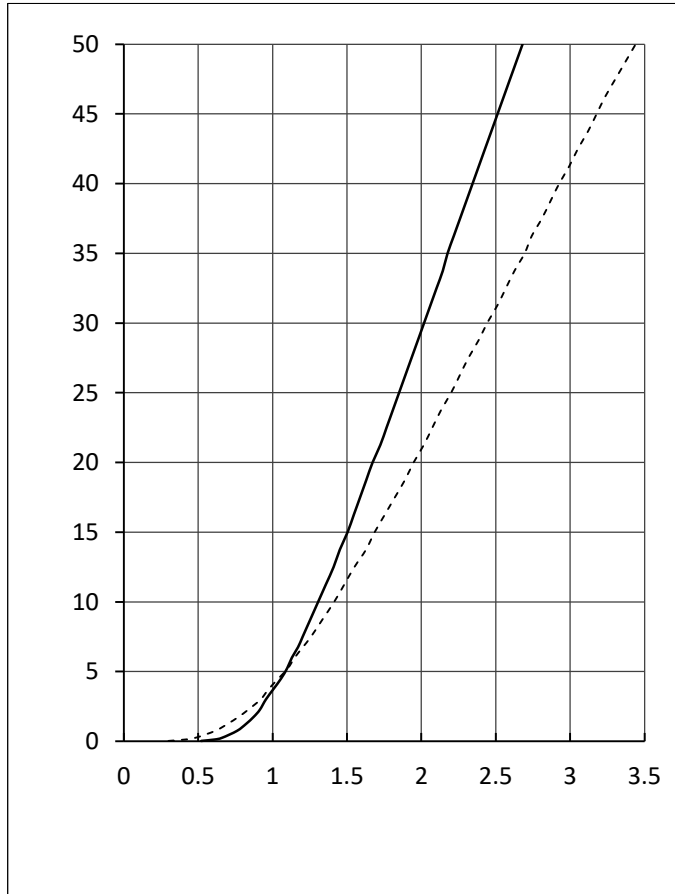
$=L \text{PO}=\text{P T L NP}$	=			$V\Omega$
$/ \text{Pa} \bar{L} T Q=$	$\Delta= =$	$\cdot (= (\Omega$		
$bP] / T [L T$				B
- aLWP	-	$= (= \text{Pc}[F$ $6 H$		6

MG25P12E1A

WT a WRP	A _{T W}	(T Q 3e			A
8 LcT NT P [P]L]P	U Lc				°C
[P]L TR NT P [P]L]P	dU [°C
]LRP P [P]L]P	R				°C
]Ld TONL NP O W	7 . 0				nH
8 O W WLO]P T L NP P] TLWNST]	= ^N 00 =, , ...	(°C [P] b TNS			mΩ
SP] LW P T L NP NT . L P	= 0 .	[P] 2- TaP]P]			6 B
		[P] / TOP TaP]P]			
		[P] 2- M]LVPN [[P]			
		[P] / TOP NS [[P]			
		[P] / TOP]PN]P]			
SP] LW P T L NP . L P TV	= 0 .	[P] 2- TaP]P]			6 B
		[P] / TOP TaP]P]			
		[P] 2- M]LVPN [[P]			
		[P] / TOP NS [[P]			
		[P] / TOP]PN]P]			
		[P] 8 O W			
8 TR1]NP P]. W [1				9
B PRS Q8 O W	2				R

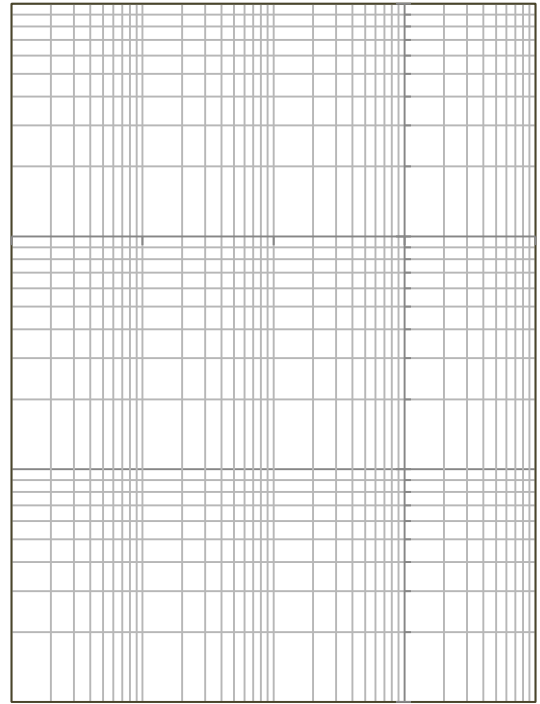
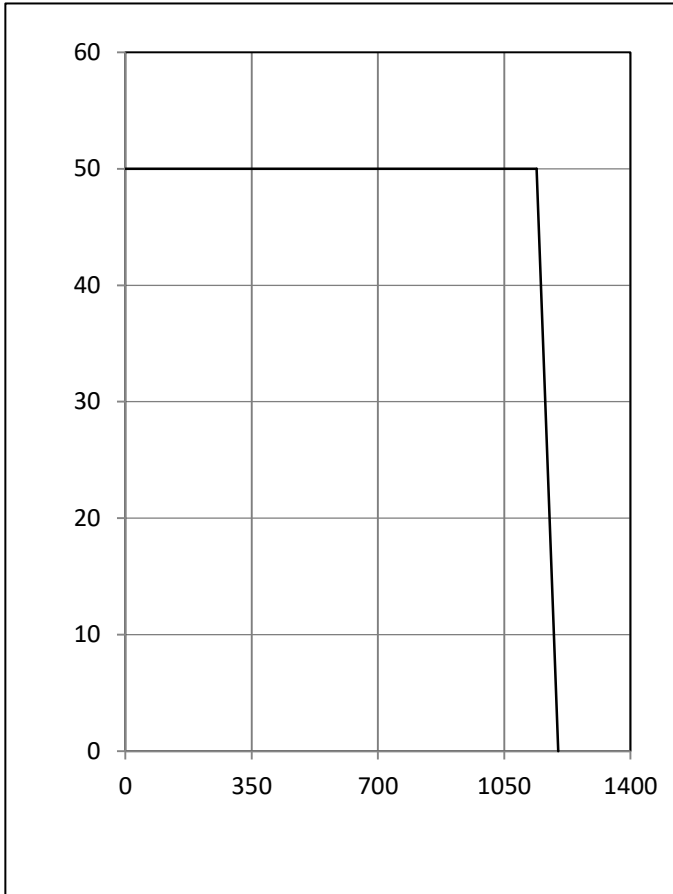


MG25P12E1A

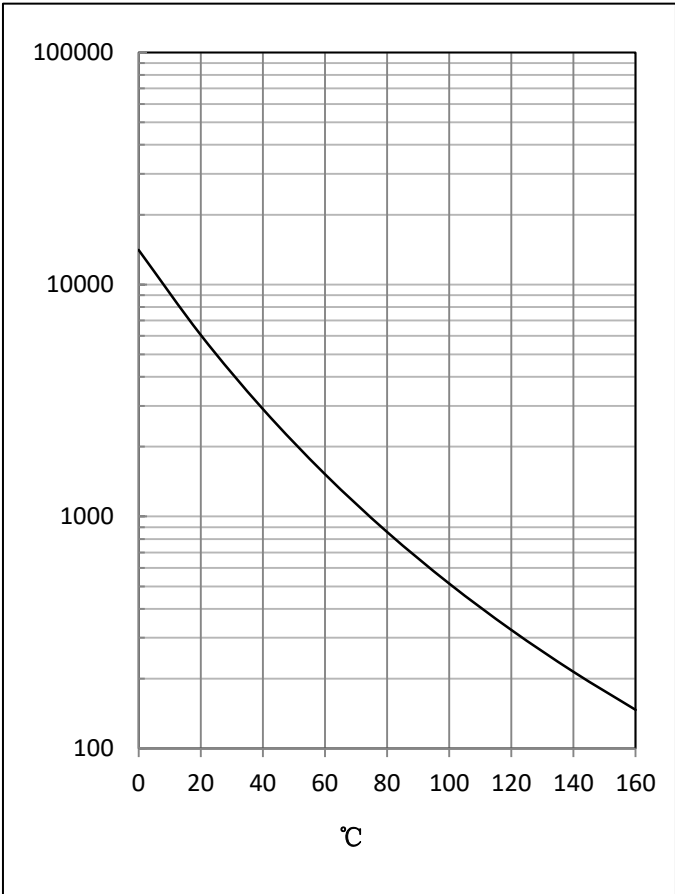
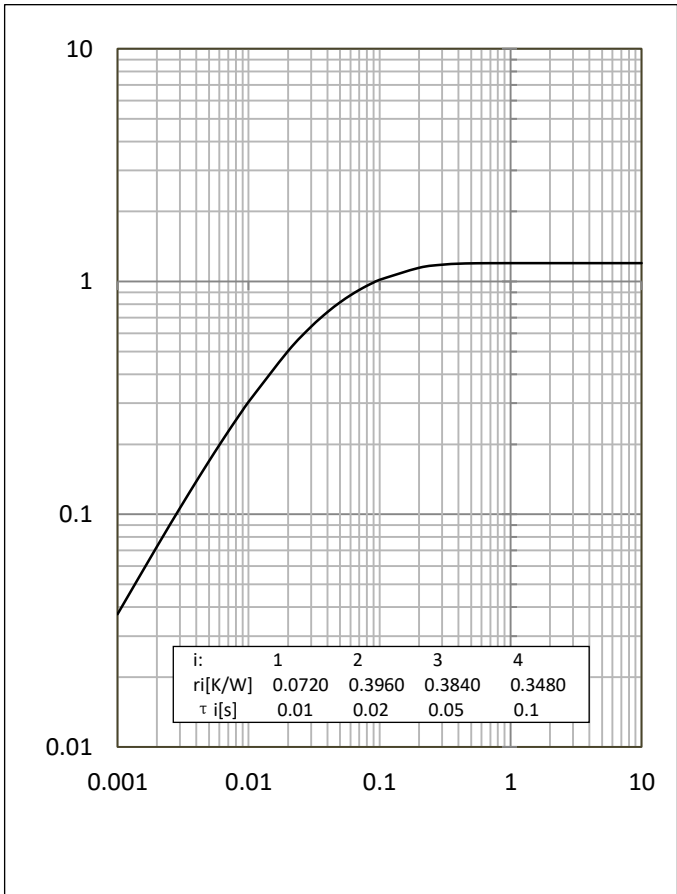
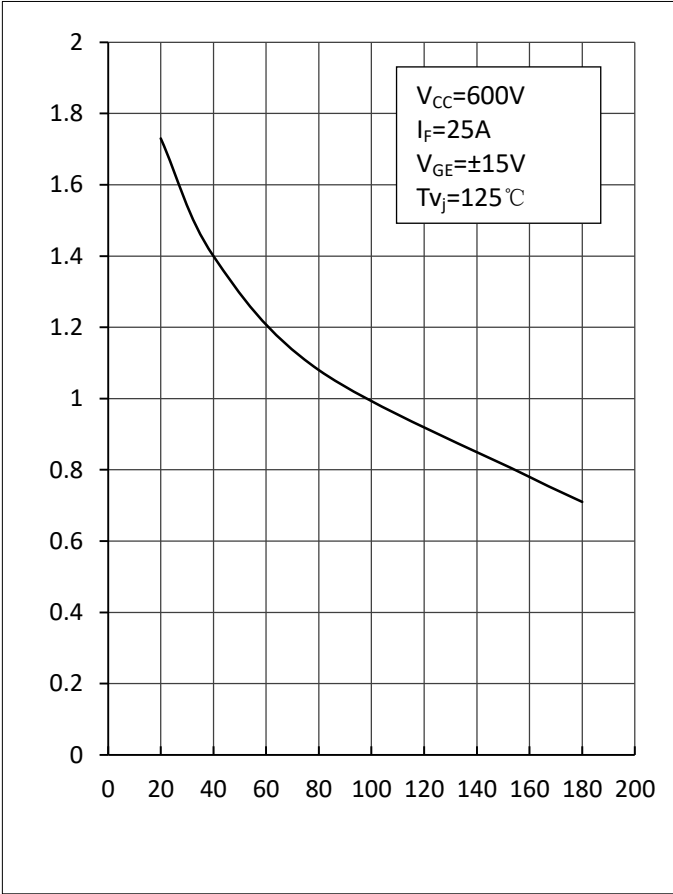




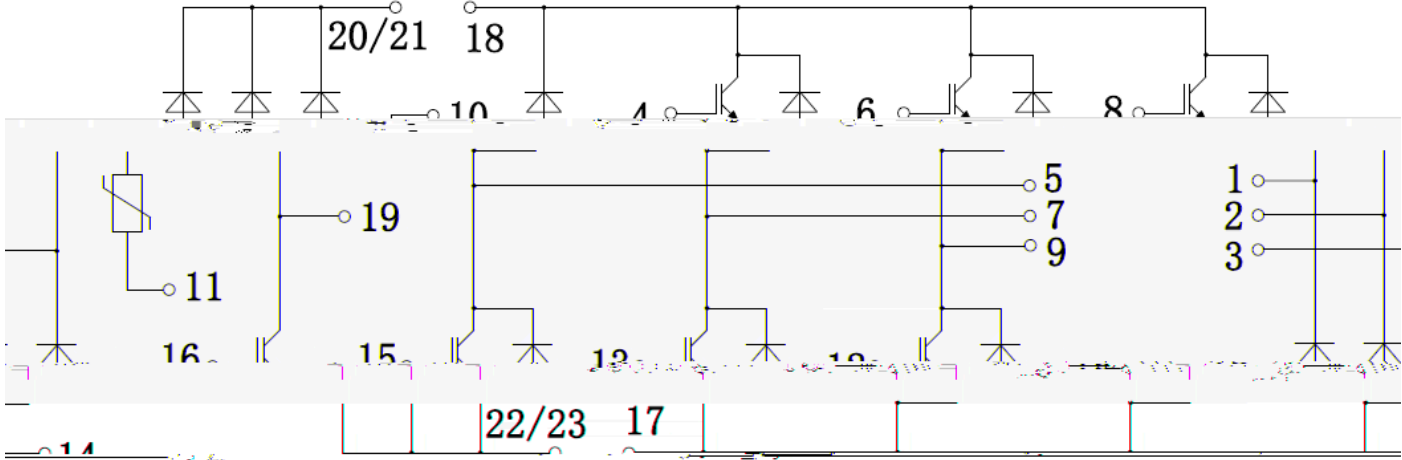
MG25P12E1A



MG25P12E1A



MG25P12E1A



Package Outline Information

