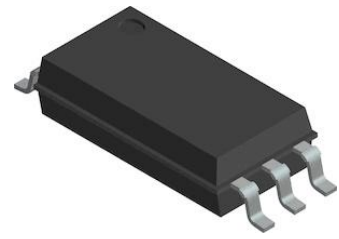

一级代理商：

深圳市弗瑞鑫电子有限公司

地址：深圳市宝安区西乡大道302号金源商务大厦B座三楼

frxelec

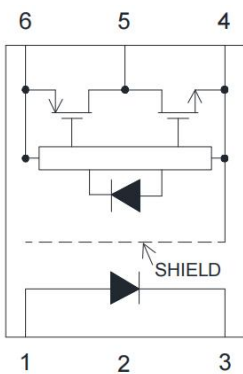


:

&"

"

"



- 1. Anode
- 3. Cathode
- 4. GND
- 5. Vo (Output)
- 6. Vcc

)"

		~	
		~	

* "

						<

+ "

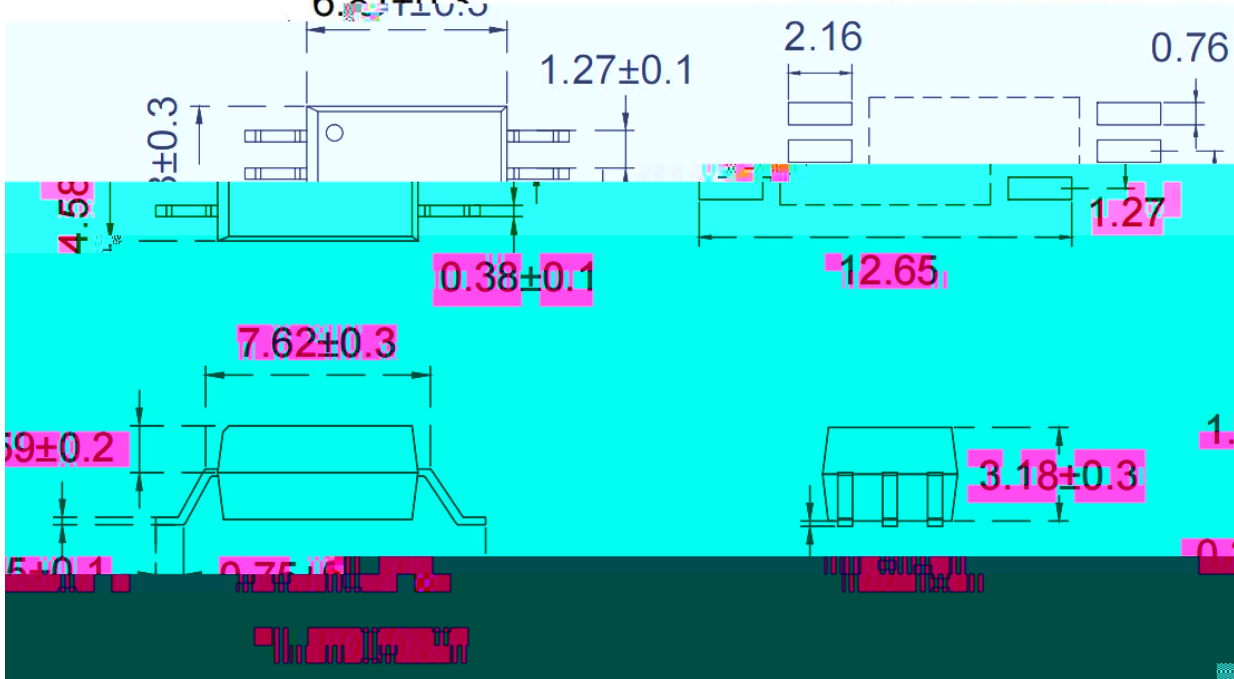
"
,



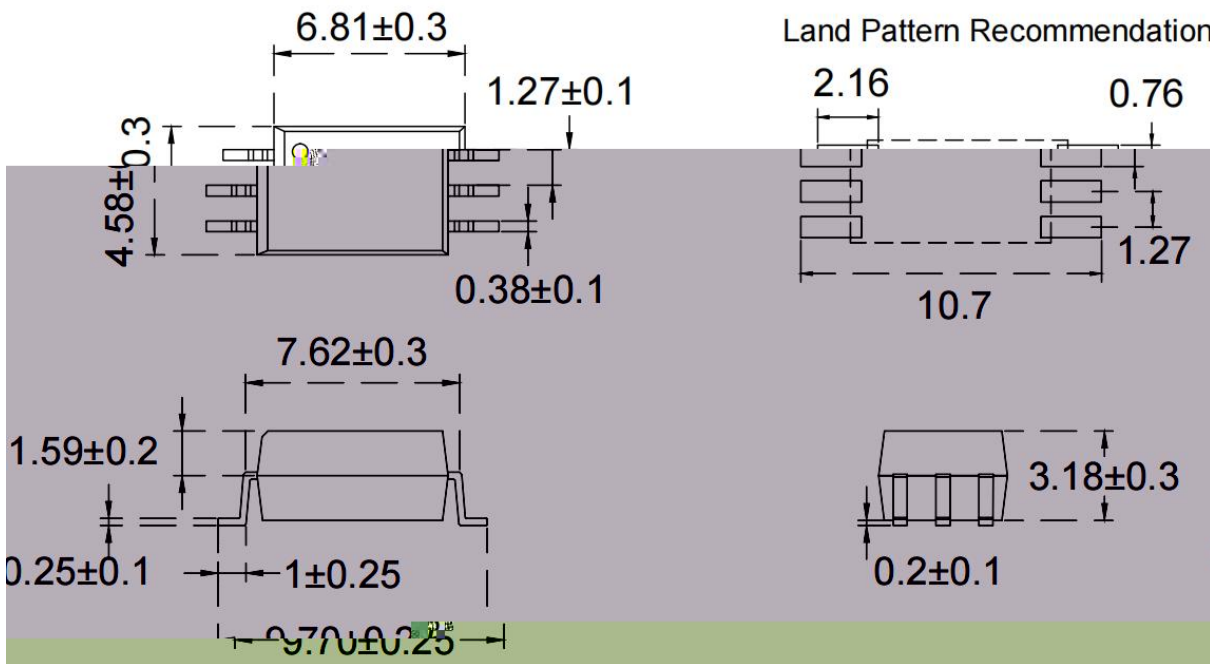
- "

%"

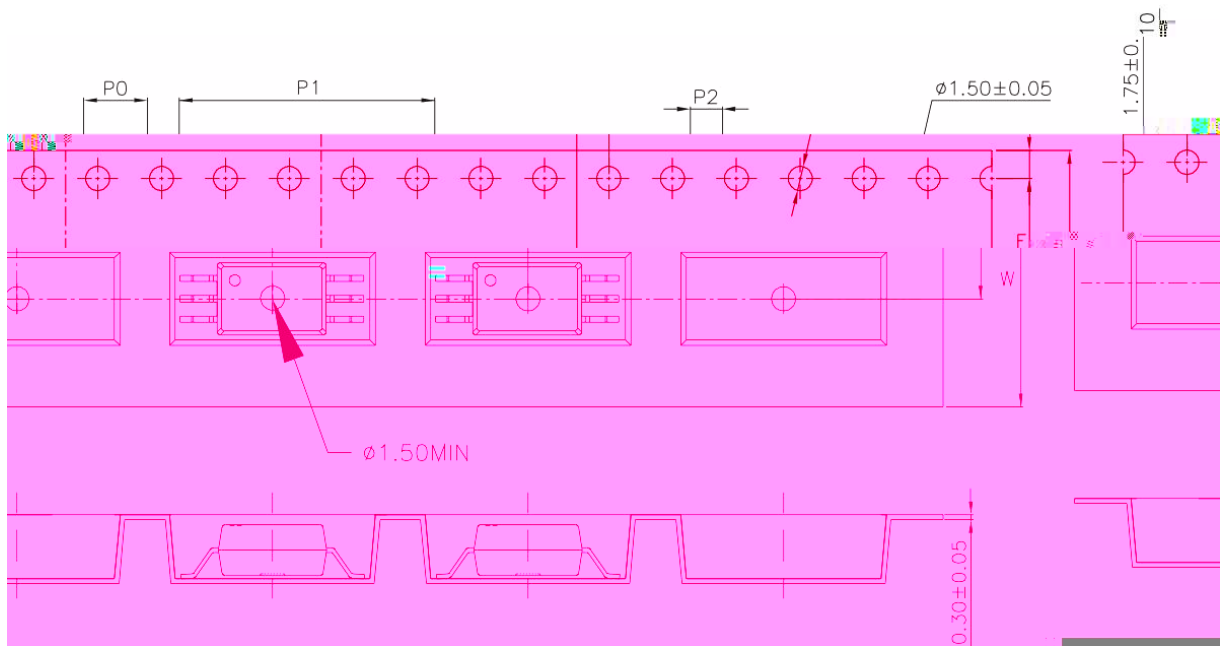
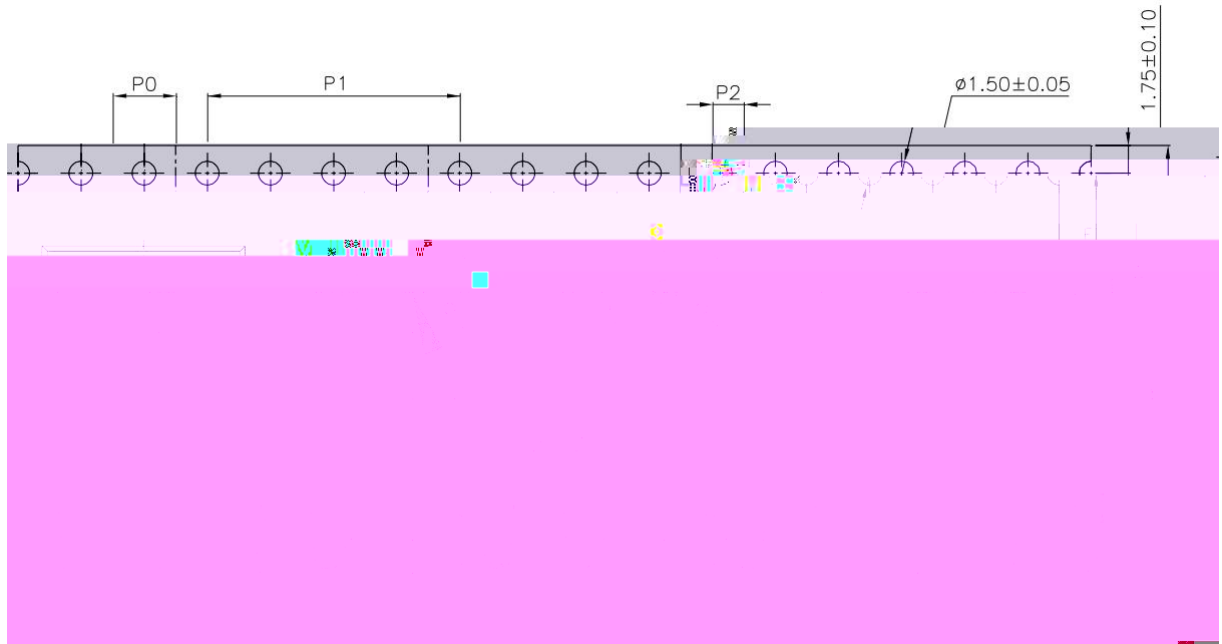
Land Pattern Recommendation

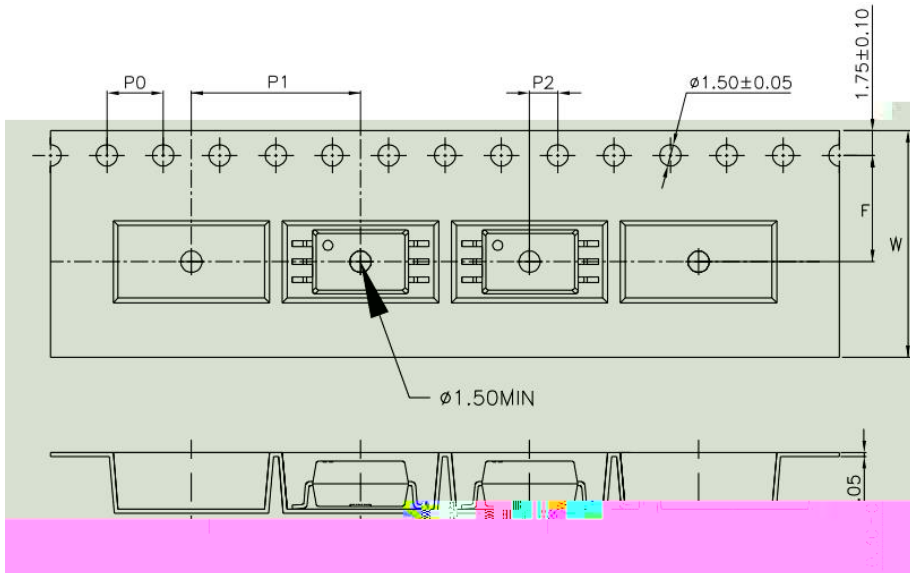
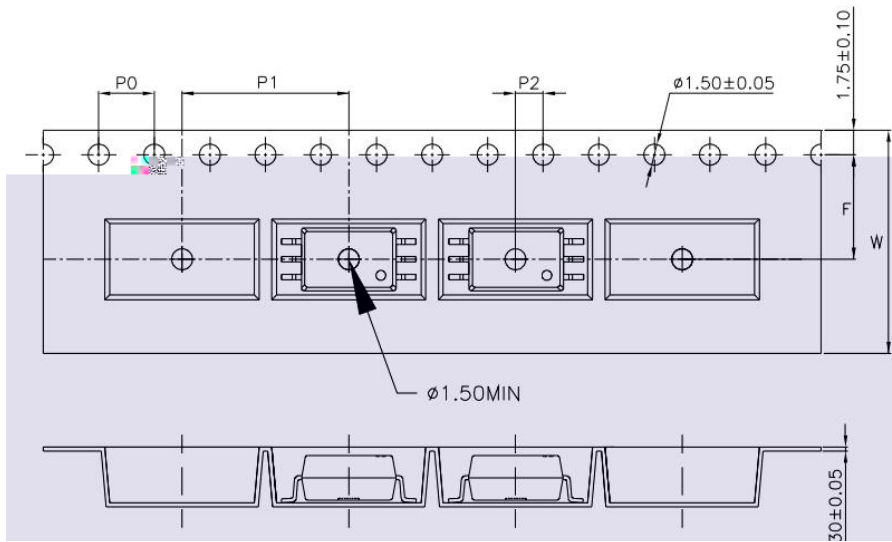


Land Pattern Recommendation






%%"





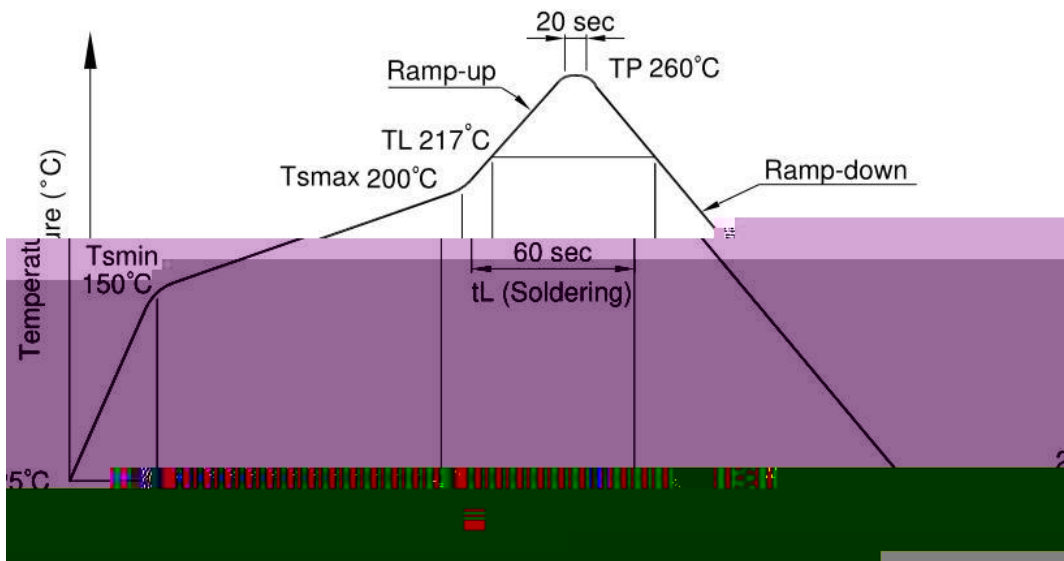
()	

%&"

 <p>ORIENT ShenZhen Orient Components Co.,LTD</p>	  	
<p>Material Code : 120PCXXXXXX</p>	<p>内箱码</p>	<p>外箱码</p>
<p>P/N : OR-XXXXXX</p>		
<p>Lot No. : XXXXXX-XXXX-TX-X</p>	<p>"XXXXXXXXXXXXXXXX" (一体机序列码)</p> <p>Made in China</p>	
<p>D/C : XXXX</p>		
<p>Qty : XXXX PCS</p>		

:

% " "



0



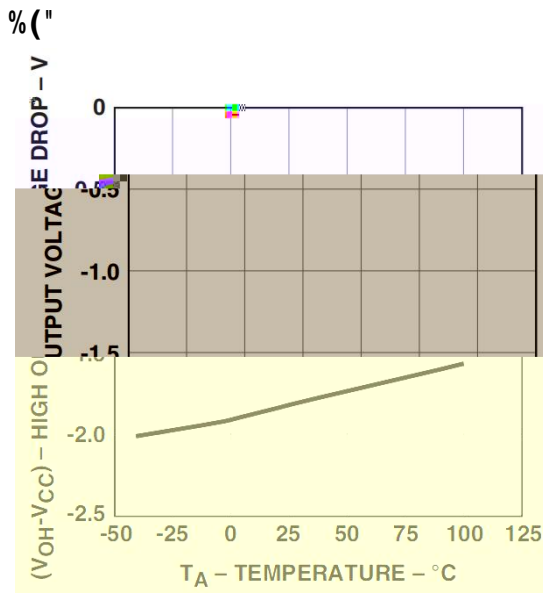


Figure 1. V_{OH} vs. Temperature.

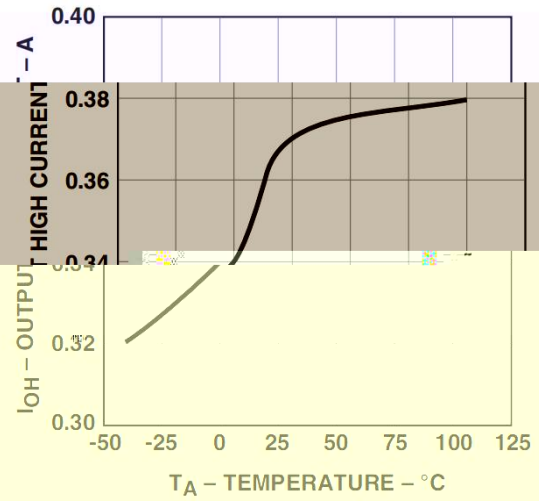


Figure 2. I_{OH} vs. Temperature.

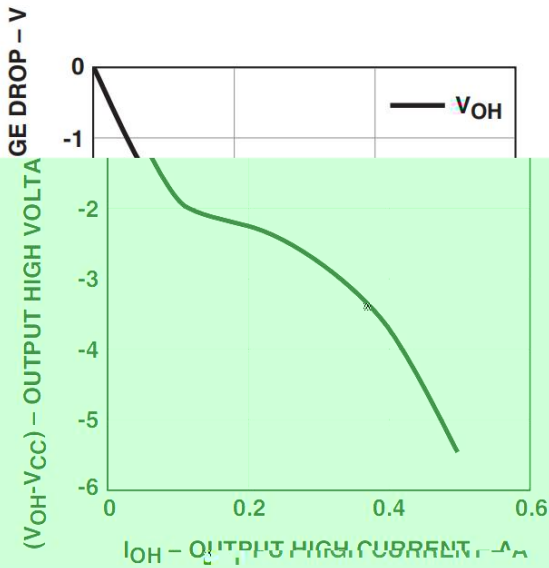


Figure 3. V_{OH} vs. I_{OH} .

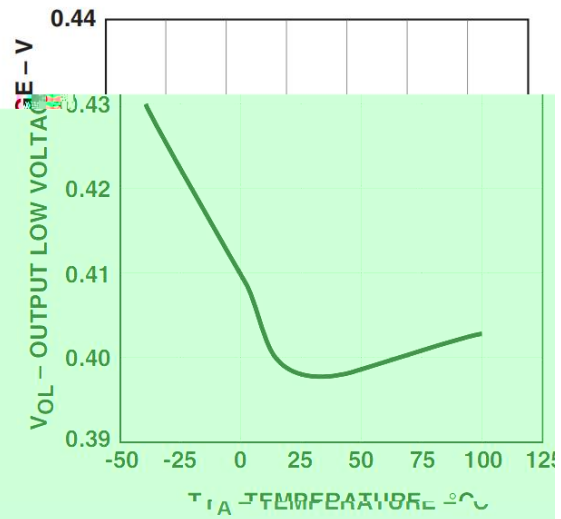


Figure 4. V_{OL} vs. Temperature.

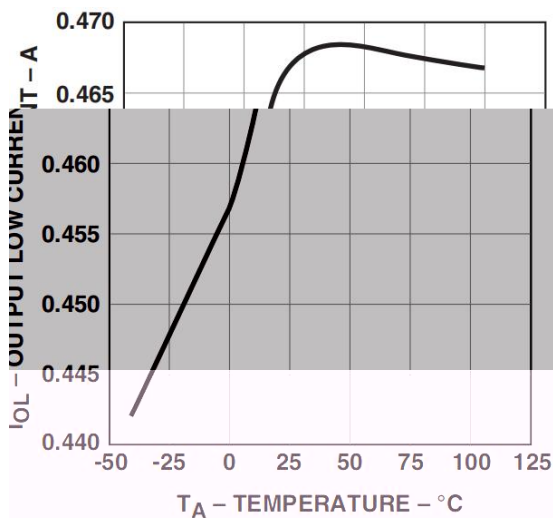


Figure 5. I_{OL} vs. Temperature.

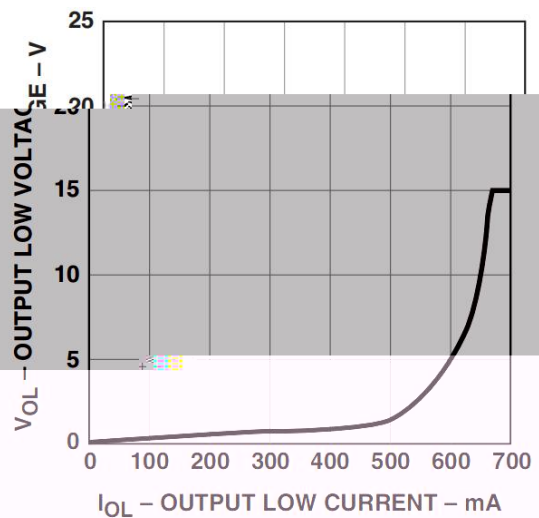


Figure 6. V_{OL} vs. I_{OL} .

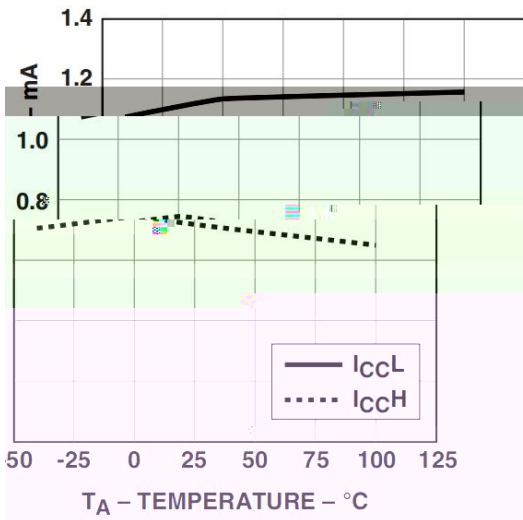


Figure 7. I_{cc} vs. Temperature.

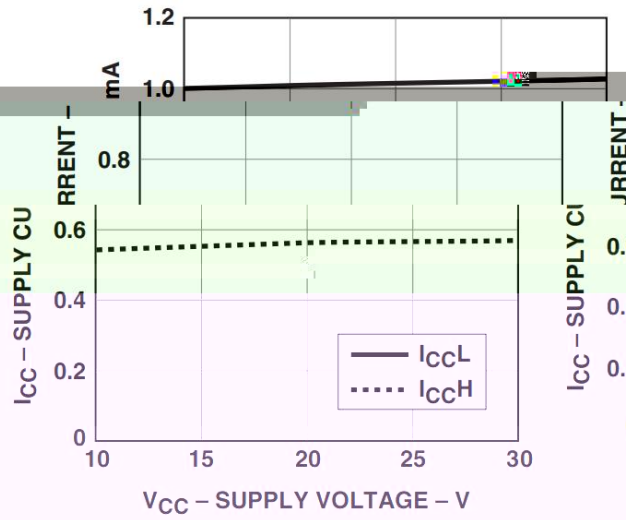


Figure 8. I_{cc} vs. V_{cc}.

Figure 7

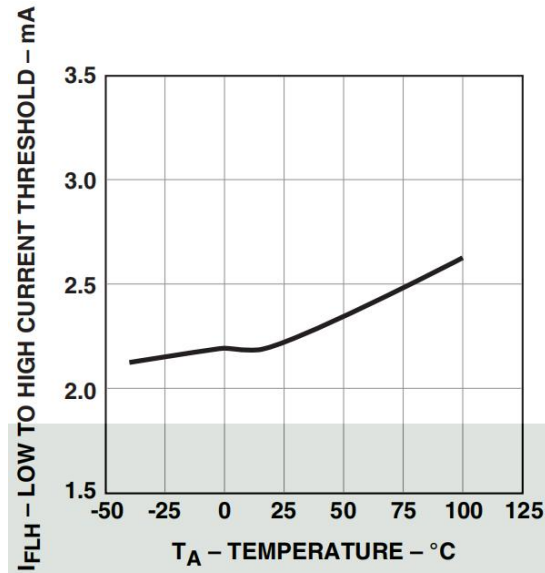


Figure 9. I_{FLH} vs. Temperature.

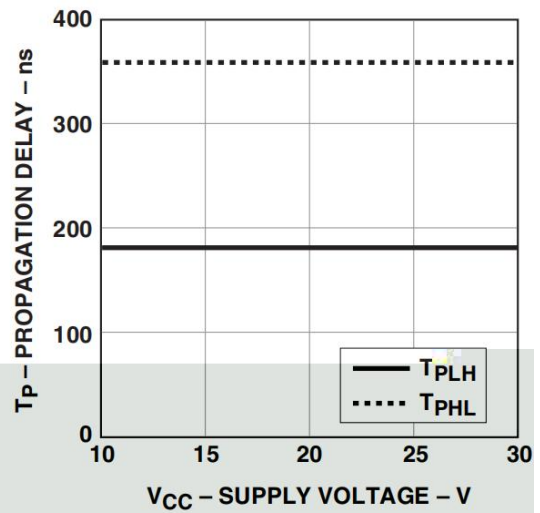


Figure 10. Propagation Delay vs. V_{cc}.

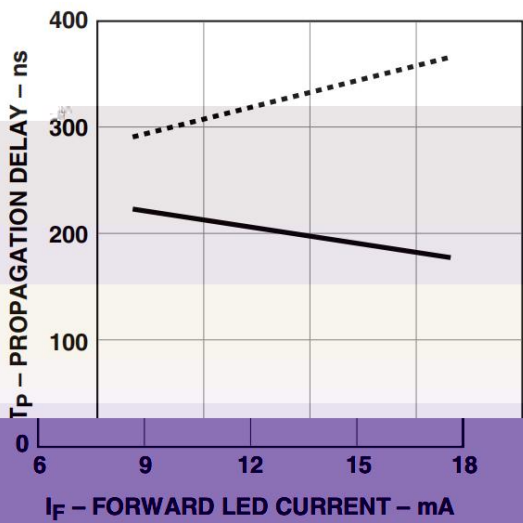


Figure 11. Propagation Delay vs. I_f.

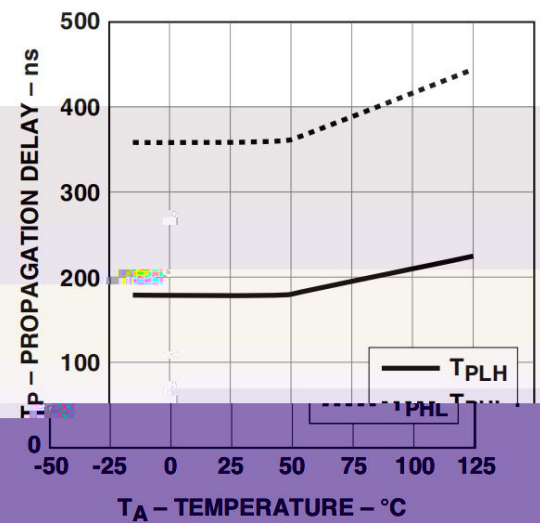


Figure 12. Propagation Delay vs. Temperature.

Figure

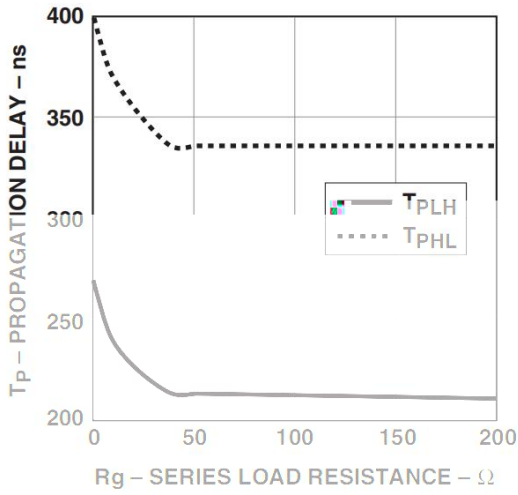


Figure 13. Propagation Delay vs. Rg

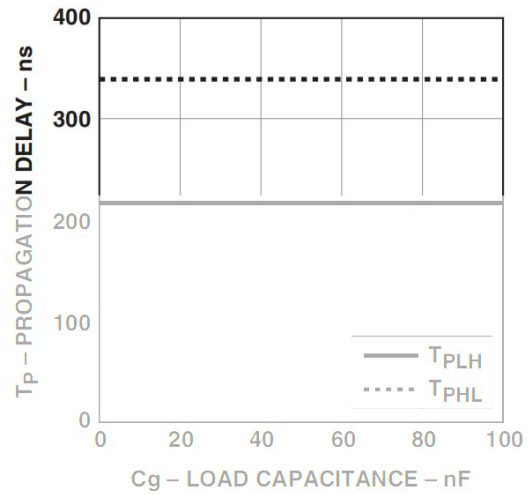


Figure 14. Propagation Delay vs. Cg

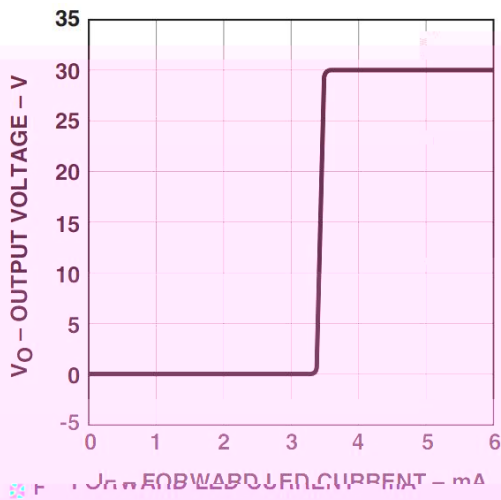


Figure 15. Transfer Characteristics.

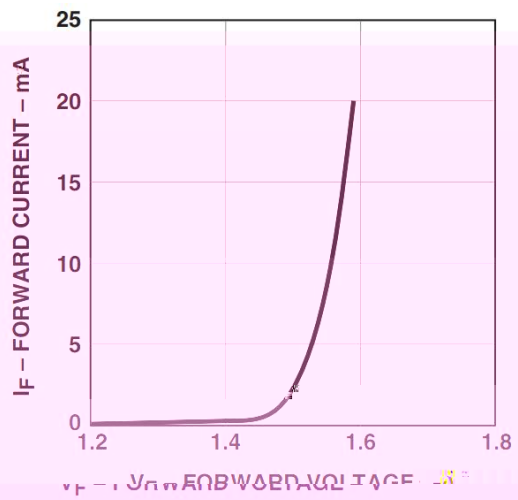
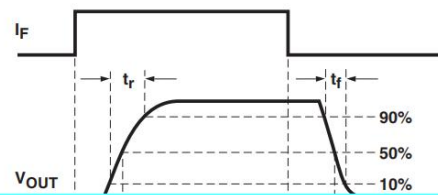
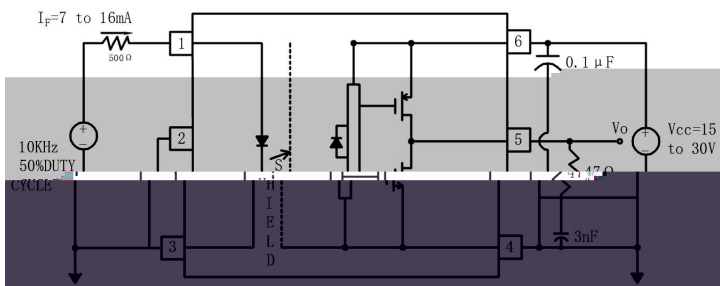


Figure 16. Input Current vs. Forward Voltage.



Figure

